



NATA LIGHTING CO.,LTD.  
www.nata.cn  
Email:info@nata.com  
Tel:+86-750-3770000 Fax:+86-750-3771111  
Address:380JinOu Road,GaoXin Zone,Jiang Men City,Guangdong,China

NT

Client:

LumCAT: 2-2684-L

Luminaire: 92.70.429.00

Report No: 2024410-B023

Ballast type: AC

Test No: 2024410-C023

Voltage(V): 34.820

LampCAT: CREE CXA1830 LES14

Current(A): 0.530

Lamp flux(lm): 2713.0

Power (W): 18.454

Number of Lamps: 1

PF: 0.000

Length(mm): 0

Width(mm): 0

Phm Type: C

Height(mm): 0

### Photometric Results

Lumens(lm): 2314.16, Efficiency(%): 85.30% , Luminous Efficacy(lm/W): 125.40

Central intensity(cd): 5373.595, Maximum intensity(cd): 5373.595

Angle of maximum intensity: C=0.0  $\gamma$ =0.0

Beam Angle(50%Imax): [C0/180]Total=34.8

[C90/270]Total=34.8

Field angle(10%Imax): [C0/180]Total=65.8

[C90/270]Total=65.8

Maximum s/h(1/2): C0\_180=0.57 C90\_270=0.57

Maximum s/h(1/4): C0\_180=0.58 C90\_270=0.58

Up flux rate of lamp(%): 0.00%

Down flux rate of lamp(%): 85.30%

Up flux rate of LUM(%): - -

Down flux rate of LUM(%): 100.00%

CIE Type : Direct lighting

Output flux ratio in  $\pi$  solid angle : 97.983%

Equipment: GMS1980  
Temperature(°C): 25.0

Date: 2024/4/10  
Humidity(%): 60.0%

Operator: NT07  
Distance(m): 7.65

$\gamma(^{\circ})$	Average I(cd)	Zonal F(lm)	Sum F(lm)	Eff Flux(%)	Eff Sum(%)
0.0	5373.594	0.000	0	0.00%	0.00%
1.0	5359.622	5.136	5.136	0.19%	0.22%
2.0	5319.900	15.328	20.464	0.56%	0.88%
3.0	5266.133	25.318	45.782	0.93%	1.98%
4.0	5187.566	34.992	80.774	1.29%	3.49%
5.0	5092.686	44.225	124.999	1.63%	5.40%
6.0	4972.642	52.896	177.895	1.95%	7.69%
7.0	4833.871	60.869	238.764	2.24%	10.32%
8.0	4671.544	68.028	306.792	2.51%	13.26%
9.0	4492.685	74.271	381.064	2.74%	16.47%
10.0	4298.682	79.559	460.622	2.93%	19.90%
11.0	4088.514	83.805	544.428	3.09%	23.53%
12.0	3871.980	87.020	631.447	3.21%	27.29%
13.0	3646.595	89.227	720.674	3.29%	31.14%
14.0	3415.212	90.391	811.064	3.33%	35.05%
15.0	3205.263	90.889	901.953	3.35%	38.98%
16.0	2985.291	90.709	992.662	3.34%	42.90%
17.0	2769.928	89.624	1082.286	3.30%	46.77%
18.0	2555.078	87.798	1170.084	3.24%	50.56%
19.0	2359.905	85.511	1255.595	3.15%	54.26%
20.0	2154.418	82.625	1338.219	3.05%	57.83%
21.0	1955.149	78.912	1417.131	2.91%	61.24%
22.0	1776.363	74.986	1492.118	2.76%	64.48%
23.0	1613.670	71.132	1563.25	2.62%	67.55%
24.0	1448.183	66.943	1630.193	2.47%	70.44%
25.0	1298.900	62.463	1692.655	2.30%	73.14%
26.0	1203.940	59.080	1751.735	2.18%	75.70%
27.0	1129.082	57.078	1808.813	2.10%	78.16%
28.0	1039.345	54.900	1863.713	2.02%	80.54%
29.0	938.811	51.754	1915.467	1.91%	82.77%
30.0	830.917	47.782	1963.25	1.76%	84.84%
31.0	729.271	43.418	2006.667	1.60%	86.71%
32.0	626.081	38.829	2045.497	1.43%	88.39%
33.0	527.339	33.980	2079.477	1.25%	89.86%
34.0	431.084	29.005	2108.481	1.07%	91.11%
35.0	342.788	24.034	2132.515	0.89%	92.15%
36.0	284.200	19.963	2152.478	0.74%	93.01%
37.0	209.964	16.117	2168.595	0.59%	93.71%

$\gamma(^{\circ})$	Average I(cd)	Zonal F(lm)	Sum F(lm)	Eff Flux(%)	Eff Sum(%)
38.0	156.270	12.224	2180.82	0.45%	94.24%
39.0	100.607	8.768	2189.588	0.32%	94.62%
40.0	79.525	6.282	2195.87	0.23%	94.89%
41.0	69.993	5.324	2201.194	0.20%	95.12%
42.0	65.106	4.908	2206.103	0.18%	95.33%
43.0	60.754	4.662	2210.765	0.17%	95.53%
44.0	57.096	4.448	2215.213	0.16%	95.72%
45.0	53.716	4.259	2219.472	0.16%	95.91%
46.0	50.754	4.086	2223.557	0.15%	96.08%
47.0	48.296	3.939	2227.497	0.15%	96.26%
48.0	45.816	3.804	2231.301	0.14%	96.42%
49.0	43.482	3.667	2234.968	0.14%	96.58%
50.0	41.332	3.536	2238.504	0.13%	96.73%
51.0	39.261	3.410	2241.914	0.13%	96.88%
52.0	37.337	3.287	2245.201	0.12%	97.02%
53.0	35.574	3.172	2248.373	0.12%	97.16%
54.0	33.782	3.057	2251.43	0.11%	97.29%
55.0	32.129	2.942	2254.372	0.11%	97.42%
56.0	30.519	2.831	2257.203	0.10%	97.54%
57.0	29.071	2.725	2259.927	0.10%	97.66%
58.0	27.549	2.618	2262.546	0.10%	97.77%
59.0	26.189	2.512	2265.058	0.09%	97.88%
60.0	24.916	2.414	2267.472	0.09%	97.98%
61.0	23.789	2.324	2269.797	0.09%	98.08%
62.0	22.692	2.240	2272.036	0.08%	98.18%
63.0	21.690	2.159	2274.195	0.08%	98.27%
64.0	20.754	2.083	2276.278	0.08%	98.36%
65.0	19.934	2.014	2278.291	0.07%	98.45%
66.0	19.130	1.949	2280.24	0.07%	98.53%
67.0	18.339	1.884	2282.124	0.07%	98.62%
68.0	17.652	1.823	2283.947	0.07%	98.69%
69.0	17.081	1.772	2285.719	0.07%	98.77%
70.0	16.452	1.722	2287.442	0.06%	98.85%
71.0	15.838	1.669	2289.11	0.06%	98.92%
72.0	15.311	1.620	2290.73	0.06%	98.99%
73.0	14.865	1.578	2292.308	0.06%	99.06%
74.0	14.389	1.538	2293.846	0.06%	99.12%
75.0	13.958	1.498	2295.344	0.06%	99.19%

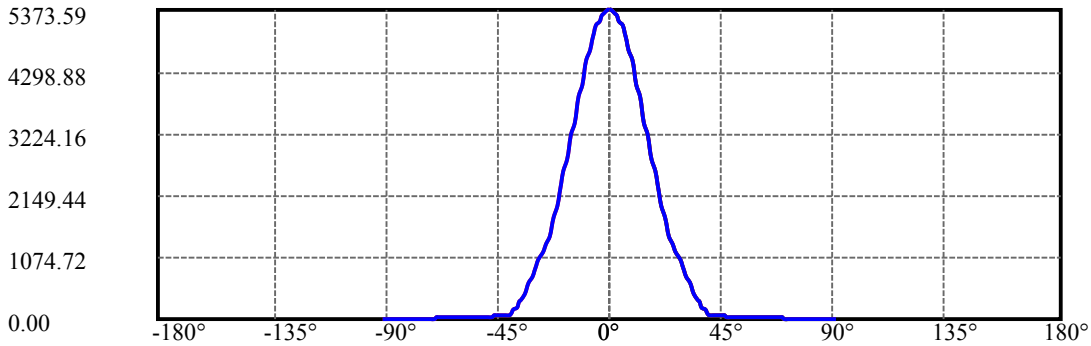
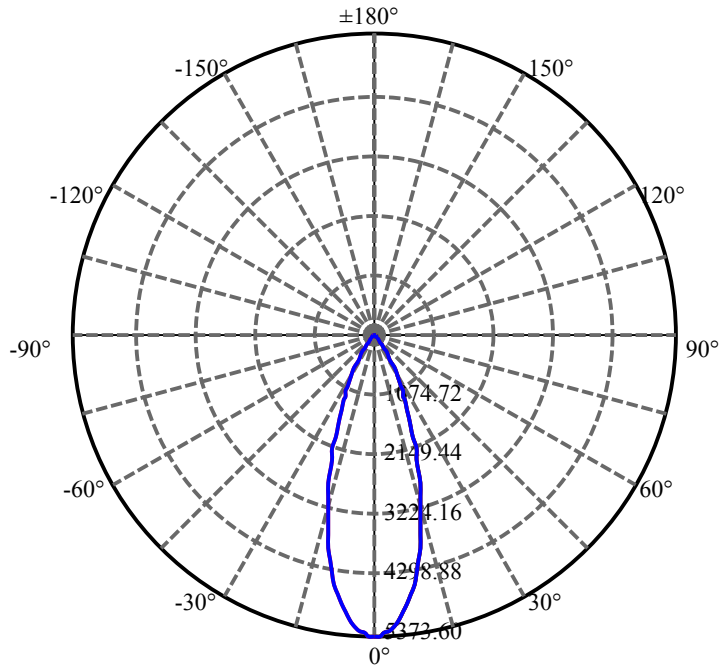
$\gamma(^{\circ})$	Average I(cd)	Zonal F(lm)	Sum F(lm)	Eff Flux(%)	Eff Sum(%)
76.0	13.592	1.462	2296.806	0.05%	99.25%
77.0	13.241	1.431	2298.237	0.05%	99.31%
78.0	12.933	1.401	2299.638	0.05%	99.37%
79.0	12.582	1.371	2301.009	0.05%	99.43%
80.0	12.253	1.339	2302.348	0.05%	99.49%
81.0	11.924	1.307	2303.655	0.05%	99.55%
82.0	11.639	1.278	2304.933	0.05%	99.60%
83.0	11.383	1.251	2306.184	0.05%	99.66%
84.0	10.951	1.217	2307.401	0.04%	99.71%
85.0	10.644	1.179	2308.58	0.04%	99.76%
86.0	10.424	1.152	2309.731	0.04%	99.81%
87.0	10.234	1.131	2310.862	0.04%	99.86%
88.0	10.073	1.112	2311.974	0.04%	99.91%
89.0	9.920	1.096	2313.07	0.04%	99.95%
90.0	9.890	1.086	2314.156	0.04%	100.00%

ZONAL LUMEN SUMMARY

Zone	Lumens	%Lamp	%Fixt
0-30	1963.25	72.36%	84.84%
0-40	2195.87	80.94%	94.89%
0-60	2267.47	83.58%	97.98%
0-90	2313.07	85.26%	99.95%
0-120	2313.07	85.26%	99.95%
0-180	2314.16	85.30%	100.00%
60-90	45.60	1.68%	1.97%
90-120	0.00	0.00%	0.00%
90-130	0.00	0.00%	0.00%
90-150	0.00	0.00%	0.00%
90-180	0.00	0.00%	0.00%
0-27.77	1851.33	68.24%	80.00%

ZONAL LUMEN SUMMARY

0-10	460.62
10-20	877.60
20-30	625.03
30-40	232.62
40-50	42.63
50-60	28.97
60-70	19.97
70-80	14.91
80-90	10.72
90-100	0.00
100-110	0.00
110-120	0.00
120-130	0.00
130-140	0.00
140-150	0.00
150-160	0.00
160-170	0.00
170-180	0.00



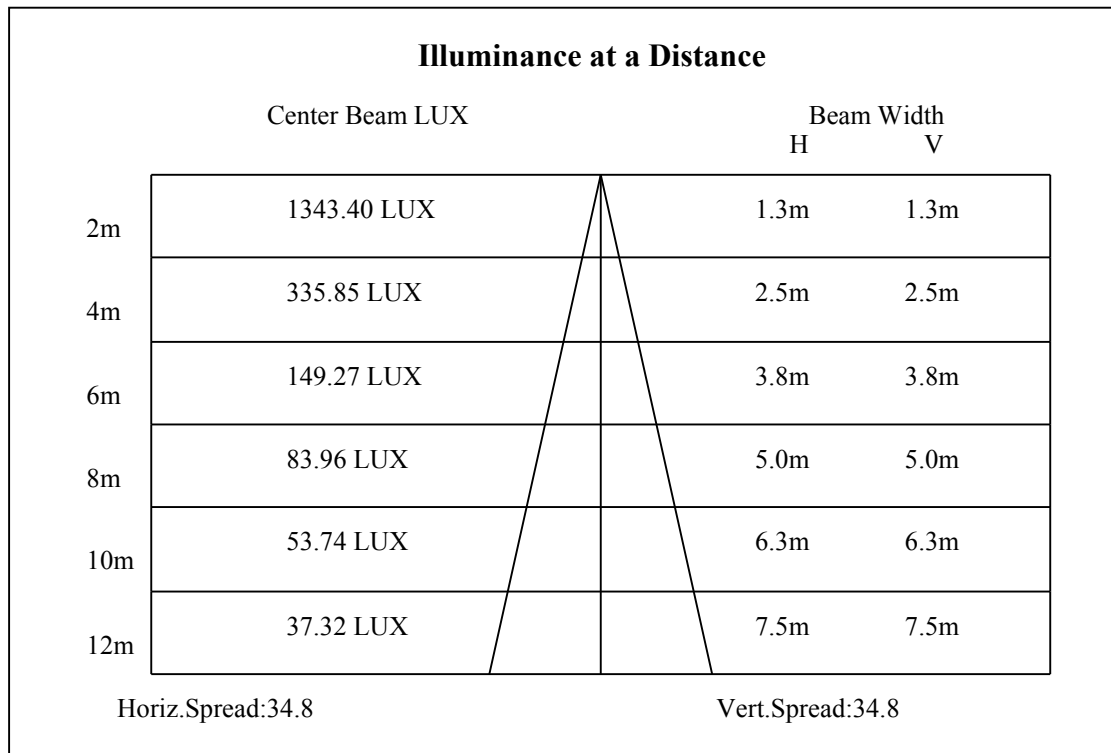
C0(Max): ———

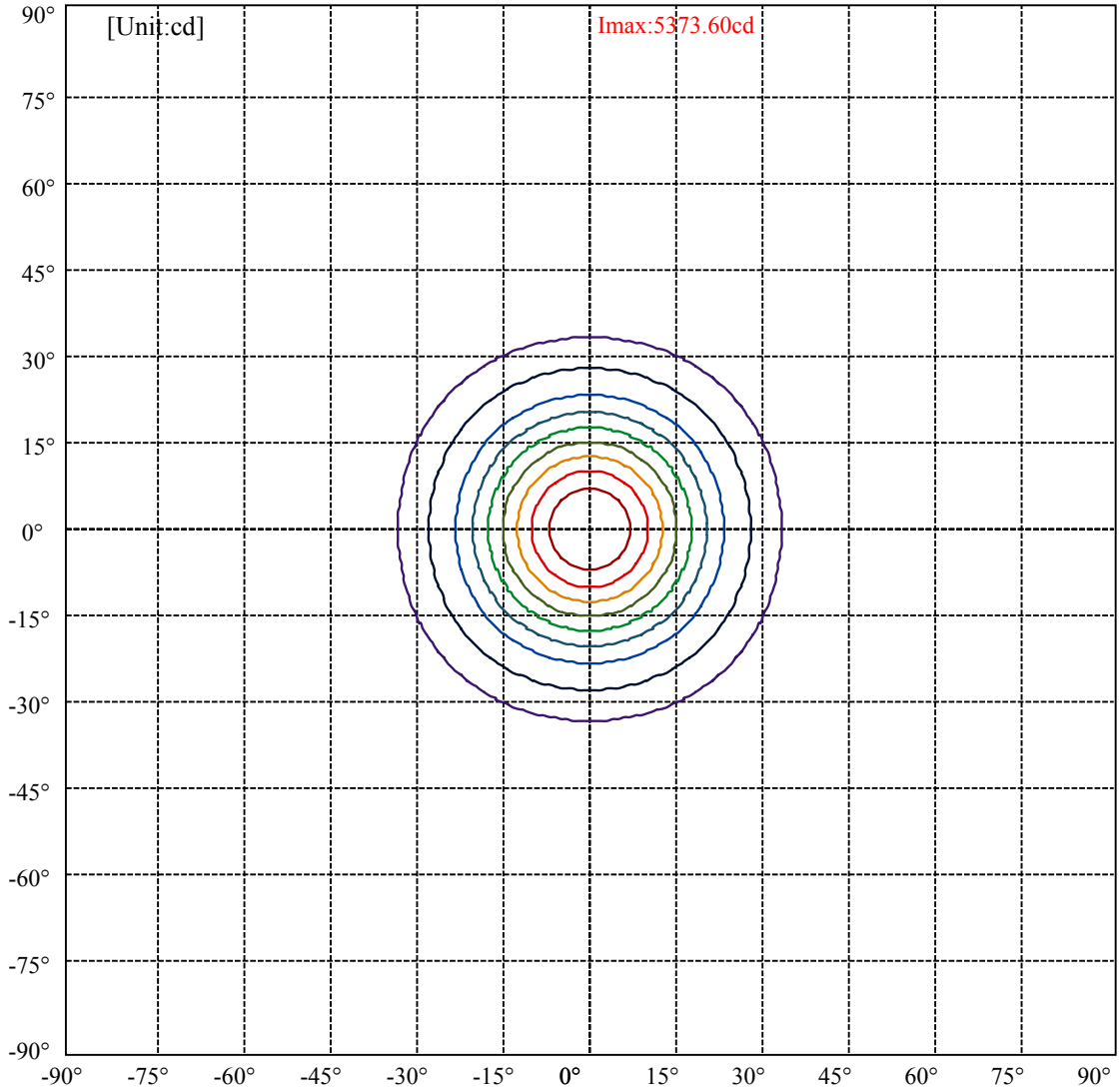
C0/C180: ———

C90/C270: ———

Field angle(10%Imax):C0/180Left:32.9 Right:32.9  
:C90/270Left:32.9 Right:32.9

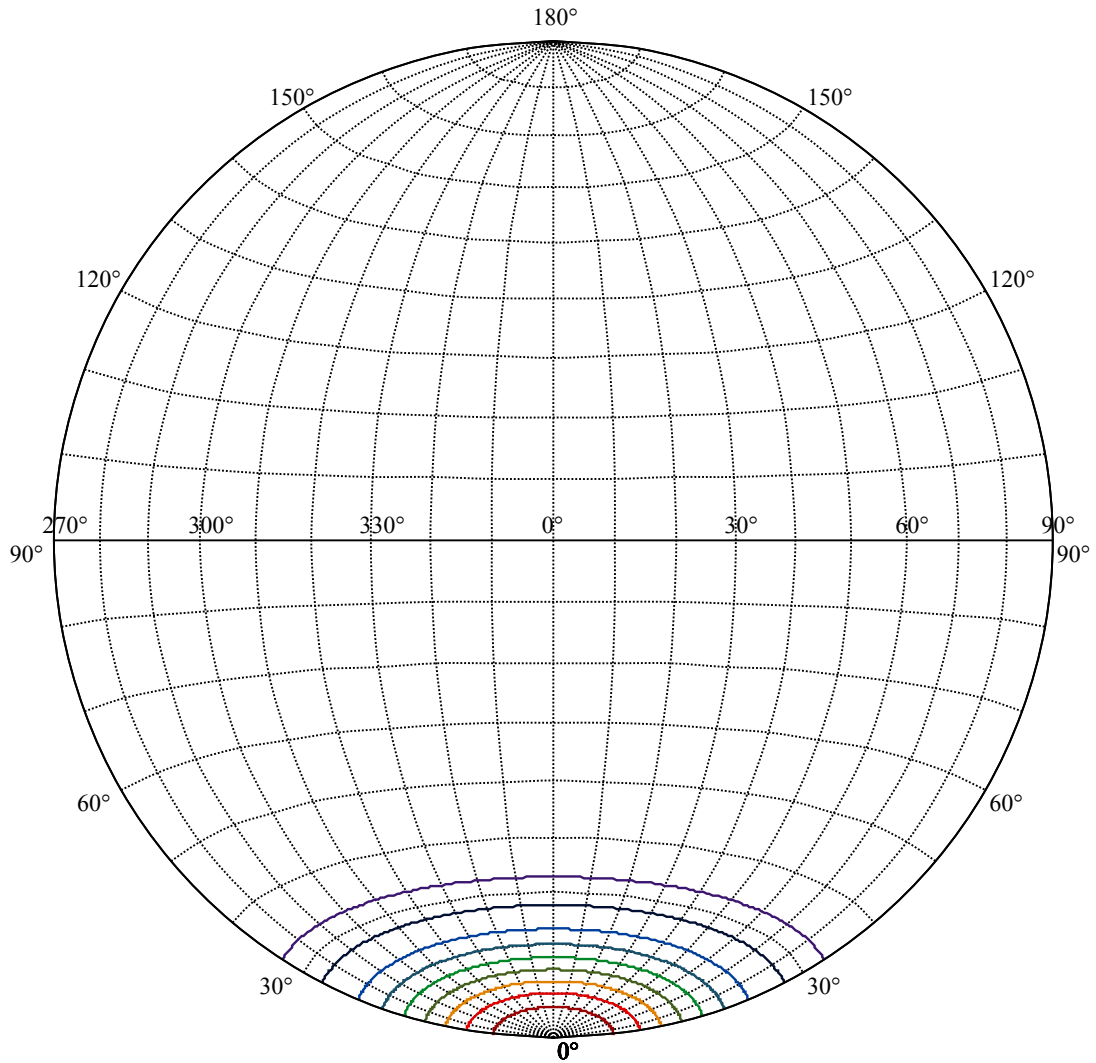
Beam Angle(50%Imax):C0/180Left:17.4 Right:17.4  
:C90/270Left:17.4 Right:17.4





(10%Imax) 537.359	—
(20%Imax) 1074.72	—
(30%Imax) 1612.08	—
(40%Imax) 2149.44	—
(50%Imax) 2686.8	—
(60%Imax) 3224.16	—
(70%Imax) 3761.52	—
(80%Imax) 4298.88	—
(90%Imax) 4836.24	—





House

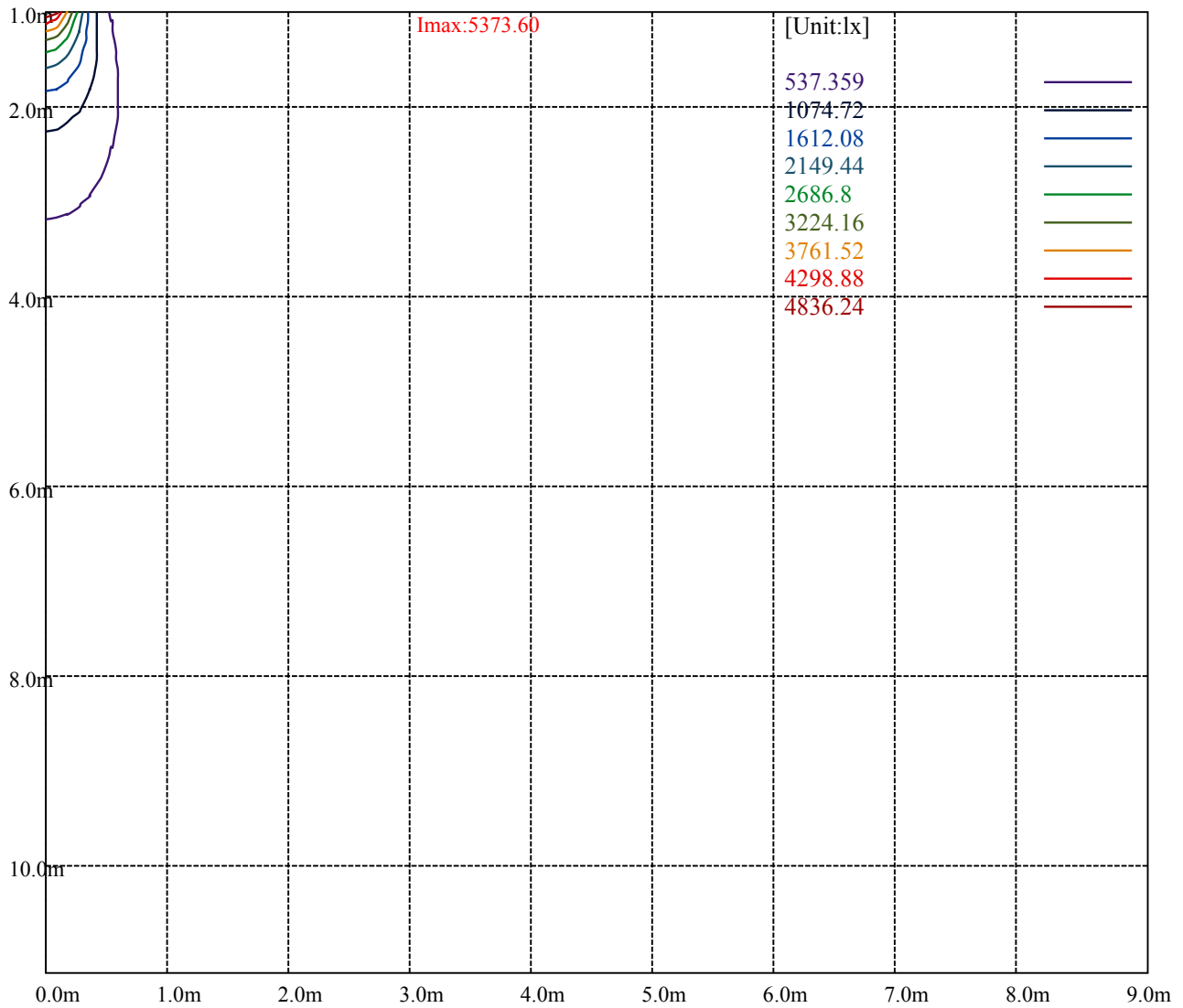
[Unit:cd]

Road

Imax:5373.60

(10%Imax) 537.359	—
(20%Imax) 1074.72	—
(30%Imax) 1612.08	—
(40%Imax) 2149.44	—
(50%Imax) 2686.8	—
(60%Imax) 3224.16	—
(70%Imax) 3761.52	—
(80%Imax) 4298.88	—
(90%Imax) 4836.24	—





Luminance Table

$\gamma$	45	50	55	60	65	70	75	80	85
C0	0	0	0	0	0	0	0	0	0
C45	0	0	0	0	0	0	0	0	0
C90	0	0	0	0	0	0	0	0	0

L(Hor)(65)	L(Ver)(65)	L45(65)	L(Hor)(75)	L(Ver)(75)	L45(75)	L(Hor)(85)	L(Ver)(85)	L45(85)
0	0	0	0	0	0	0	0	0

Glare Table

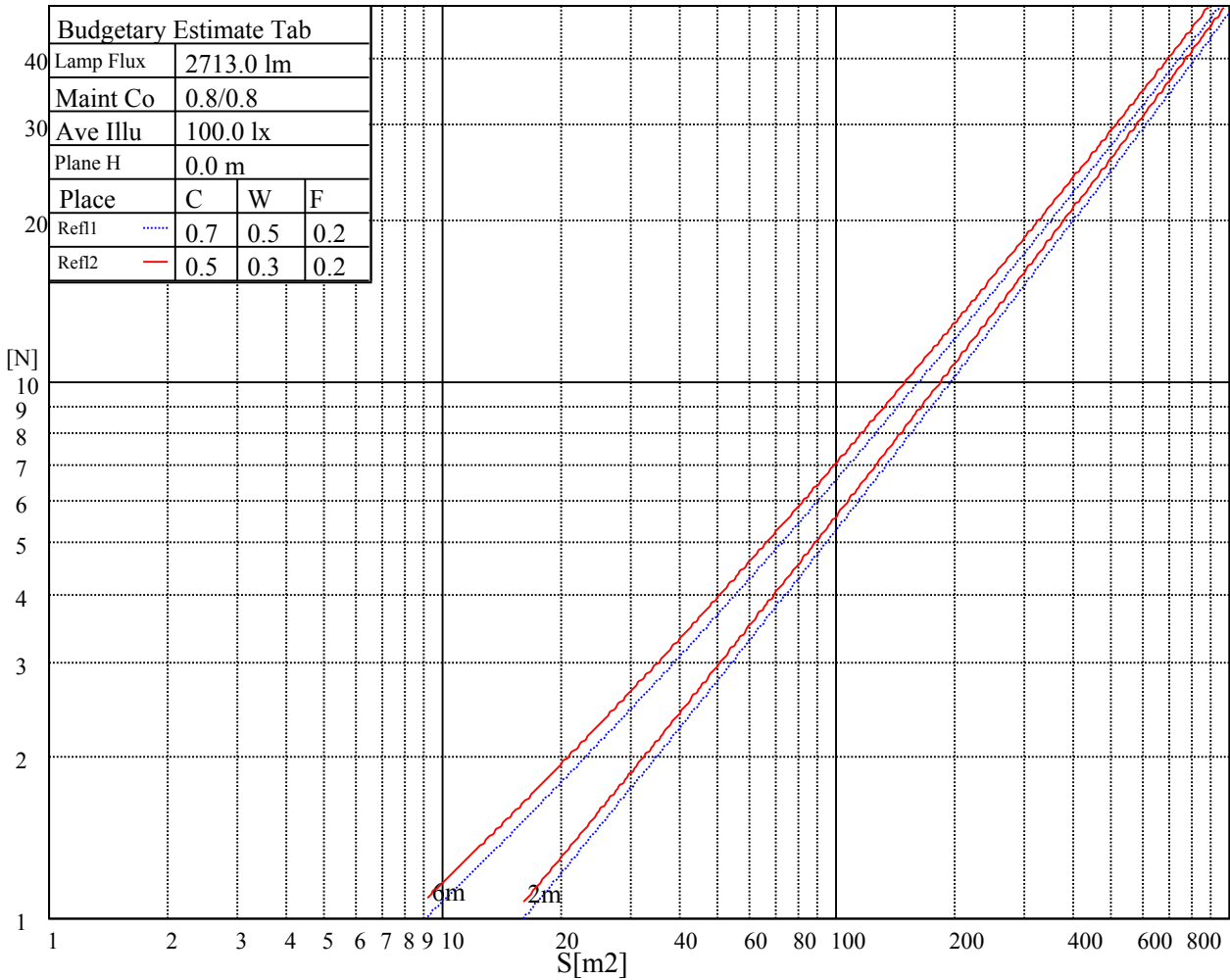
Glare	Quality	Service Values Illuminance(lx)							
1.15	A	2000	1000	500	<=300				
1.5	B		2000	1000	500	<=300			
1.85	C			2000	1000	500	<=300		
2.2	D				2000	1000	500	<=300	
2.55	E					2000	1000	500	<=300
		a	b	c	d	e	f	g	h

Luminance Limiting Curve

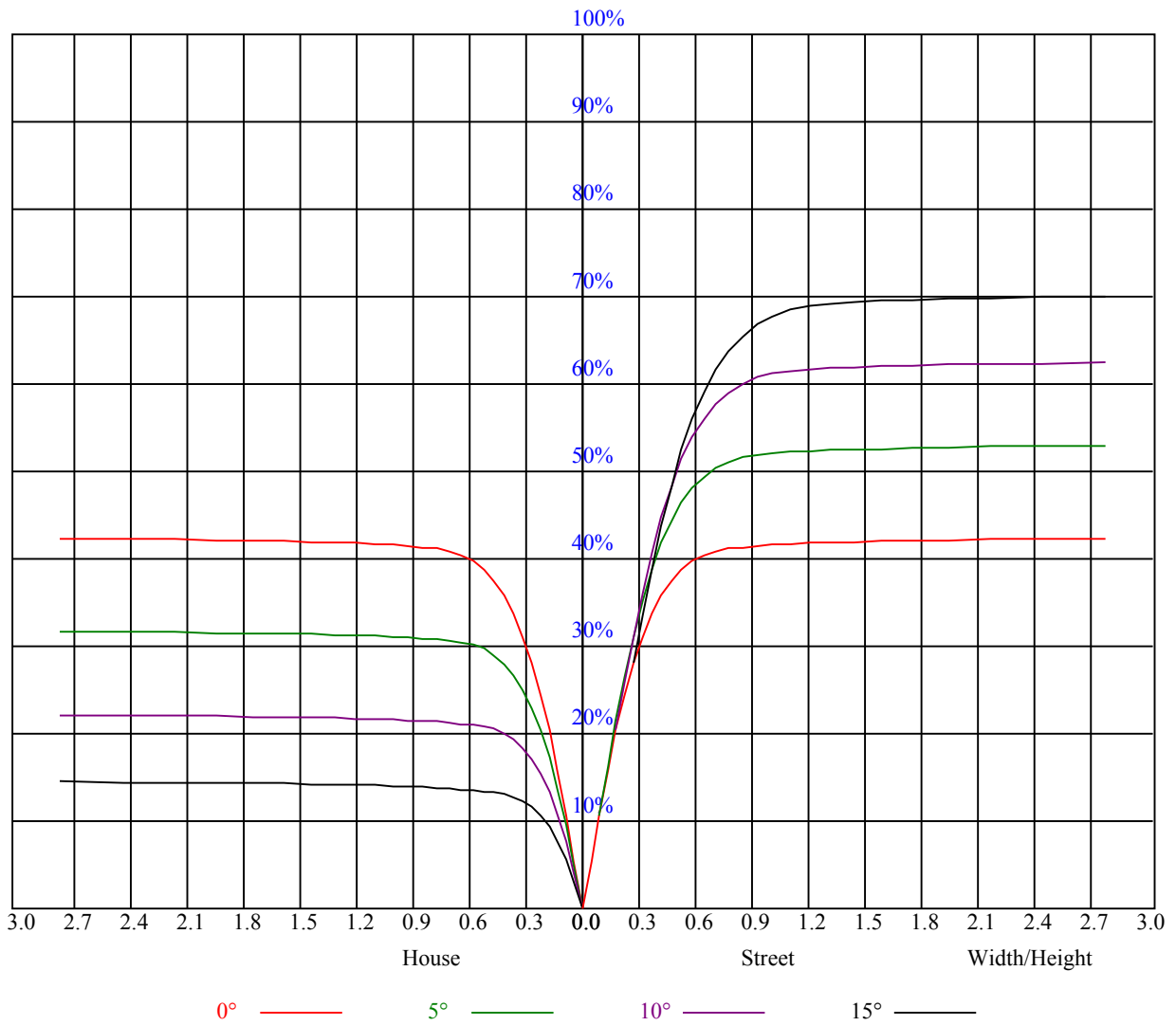


Illumination assessment according UGR											
Rf of Ceiling	70	70	50	50	30	70	70	50	50	30	
Rf of Wall	50	30	50	30	30	50	30	50	30	30	
Rf of Floor	20	20	20	20	20	20	20	20	20	20	
Room dimensions		Viewed crosswise					Viewed endwise				
X	Y										
2H	2H	非数字	非数字	非数字	非数字	非数字	非数字	非数字	非数字	非数字	
	3H	非数字	非数字	非数字	非数字	非数字	非数字	非数字	非数字	非数字	
	4H	非数字	非数字	非数字	非数字	非数字	非数字	非数字	非数字	非数字	
	6H	非数字	非数字	非数字	非数字	非数字	非数字	非数字	非数字	非数字	
	8H	非数字	非数字	非数字	非数字	非数字	非数字	非数字	非数字	非数字	
	12H	非数字	非数字	非数字	非数字	非数字	非数字	非数字	非数字	非数字	
4H	2H	非数字	非数字	非数字	非数字	非数字	非数字	非数字	非数字	非数字	
	3H	非数字	非数字	非数字	非数字	非数字	非数字	非数字	非数字	非数字	
	4H	非数字	非数字	非数字	非数字	非数字	非数字	非数字	非数字	非数字	
	6H	非数字	非数字	非数字	非数字	非数字	非数字	非数字	非数字	非数字	
	8H	非数字	非数字	非数字	非数字	非数字	非数字	非数字	非数字	非数字	
8H	12H	非数字	非数字	非数字	非数字	非数字	非数字	非数字	非数字	非数字	
	4H	非数字	非数字	非数字	非数字	非数字	非数字	非数字	非数字	非数字	
	6H	非数字	非数字	非数字	非数字	非数字	非数字	非数字	非数字	非数字	
	8H	非数字	非数字	非数字	非数字	非数字	非数字	非数字	非数字	非数字	
12H	12H	非数字	非数字	非数字	非数字	非数字	非数字	非数字	非数字	非数字	
	4H	非数字	非数字	非数字	非数字	非数字	非数字	非数字	非数字	非数字	
	6H	非数字	非数字	非数字	非数字	非数字	非数字	非数字	非数字	非数字	
	8H	非数字	非数字	非数字	非数字	非数字	非数字	非数字	非数字	非数字	
Variation with the observer position at spacings:											
S = 1.0H		非数字/非数字					非数字/非数字				
S = 1.5H		非数字/非数字					非数字/非数字				
S = 2.0H		非数字/非数字					非数字/非数字				
Standard tables:		BK0					BK0				
Uncorrected UGR		负无穷大					负无穷大				

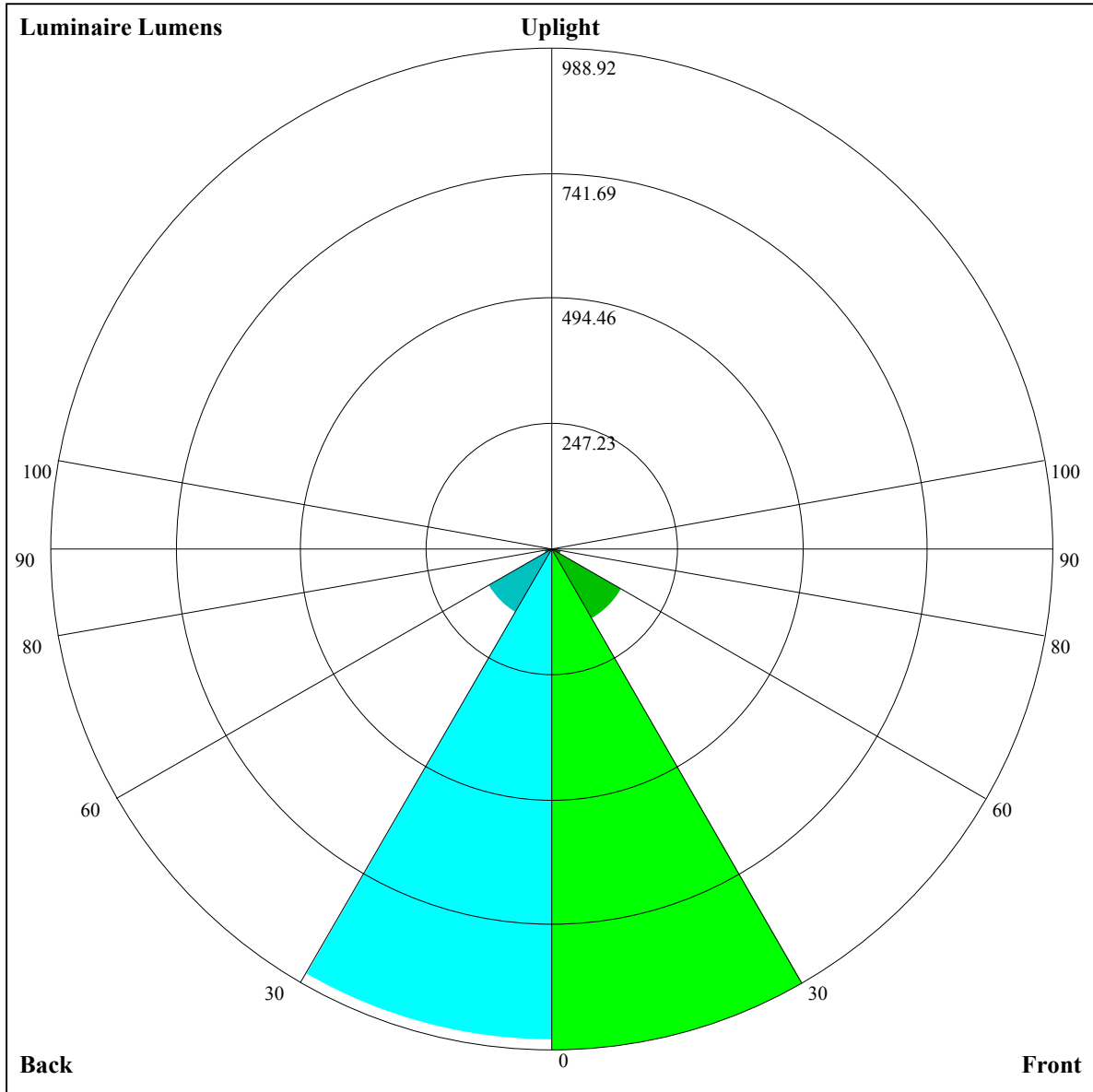
UGR calculation is based on CIE Publ. 117 ,S/H = 0.25



RHOCC	80			70			50			30			10			0
RHOW	50	30	10	50	30	10	50	30	10	50	30	10	50	30	10	0
RCR	COEFFICIENTS OF UTILIZATION RHOF=20 CU															
0	1.02	1.02	1.02	0.99	0.99	0.99	0.95	0.95	0.95	0.91	0.91	0.91	0.87	0.87	0.87	0.85
1	0.95	0.93	0.91	0.93	0.91	0.90	0.90	0.88	0.87	0.86	0.85	0.84	0.84	0.83	0.82	0.80
2	0.89	0.86	0.83	0.88	0.85	0.82	0.85	0.83	0.81	0.82	0.81	0.79	0.80	0.79	0.77	0.76
3	0.84	0.80	0.77	0.83	0.79	0.77	0.81	0.78	0.75	0.79	0.76	0.74	0.77	0.75	0.73	0.72
4	0.80	0.75	0.72	0.79	0.75	0.72	0.77	0.74	0.71	0.75	0.73	0.70	0.74	0.71	0.69	0.68
5	0.76	0.71	0.68	0.75	0.71	0.68	0.73	0.70	0.67	0.72	0.69	0.67	0.71	0.68	0.66	0.65
6	0.72	0.68	0.64	0.71	0.67	0.64	0.70	0.67	0.64	0.69	0.66	0.63	0.68	0.65	0.63	0.62
7	0.69	0.64	0.61	0.68	0.64	0.61	0.67	0.63	0.61	0.66	0.63	0.60	0.65	0.62	0.60	0.59
8	0.66	0.61	0.58	0.65	0.61	0.58	0.64	0.61	0.58	0.64	0.60	0.58	0.63	0.60	0.57	0.56
9	0.63	0.59	0.56	0.63	0.58	0.56	0.62	0.58	0.55	0.61	0.58	0.55	0.60	0.57	0.55	0.54
10	0.60	0.56	0.53	0.60	0.56	0.53	0.59	0.56	0.53	0.59	0.55	0.53	0.58	0.55	0.53	0.52







Luminaire Lumens:

FL=988.92,FM=160.61,FH=17.55,FVH=5.92

BL=971.37,BM=144.58,BH=17.36,BVH=5.92

UL=0,UH=0

BUG Rating:B2-U0-G0

Intensity data(cd)

C/γ(°)	0.0	1.0	2.0	3.0	4.0	5.0	6.0	7.0	8.0
0.0	5379.45	5354.87	5318.00	5262.99	5181.64	5087.42	4976.81	4849.23	4673.08
45.0	5359.55	5378.28	5363.06	5336.73	5286.40	5196.27	5123.12	4989.10	4869.72
90.0	5381.20	5368.33	5332.63	5271.77	5190.42	5109.07	4966.28	4835.77	4690.64
135.0	5374.18	5377.11	5363.65	5321.51	5256.55	5180.47	5056.40	4940.53	4809.44
180.0	5379.45	5370.67	5342.58	5284.64	5200.95	5114.34	5006.07	4841.62	4687.13
225.0	5359.55	5318.58	5239.58	5160.57	5067.52	4932.92	4792.47	4637.97	4458.89
270.0	5381.20	5369.50	5323.27	5277.03	5190.42	5092.69	4986.18	4850.40	4659.03
315.0	5374.18	5339.65	5276.45	5213.83	5126.63	5028.31	4873.81	4726.34	4524.43
360.0	5379.45	5354.87	5318.00	5262.99	5181.64	5087.42	4976.81	4849.23	4673.08
C/γ(°)	9.0	10.0	11.0	12.0	13.0	14.0	15.0	16.0	17.0
0.0	4507.46	4275.13	4078.49	3869.57	3603.29	3393.78	3186.61	2989.39	2738.33
45.0	4727.51	4574.76	4395.68	4144.62	3939.79	3727.94	3520.77	3261.52	3057.27
90.0	4521.51	4296.20	4107.17	3903.51	3694.00	3436.50	3228.16	3026.26	2779.88
135.0	4613.97	4443.67	4254.06	4010.02	3809.87	3599.78	3399.05	3139.21	2939.64
180.0	4489.90	4299.71	4091.37	3886.54	3628.45	3410.75	3204.17	3004.02	2763.49
225.0	4225.38	4026.99	3816.31	3603.87	3345.20	3142.13	2895.17	2702.04	2506.58
270.0	4506.88	4316.68	4059.76	3859.03	3662.40	3380.90	3179.59	2929.69	2741.84
315.0	4348.87	4156.33	3905.26	3698.68	3489.76	3229.92	3028.60	2830.21	2632.40
360.0	4507.46	4275.13	4078.49	3869.57	3603.29	3393.78	3186.61	2989.39	2738.33
C/γ(°)	18.0	19.0	20.0	21.0	22.0	23.0	24.0	25.0	26.0
0.0	2542.86	2351.49	2167.15	1943.01	1778.56	1629.91	1469.56	1288.72	1166.82
45.0	2809.72	2616.01	2424.65	2183.53	2003.87	1833.57	1675.56	1500.58	1385.29
90.0	2582.07	2388.95	2152.52	1968.17	1795.53	1602.99	1463.12	1272.34	1150.32
135.0	2741.25	2546.96	2305.85	2116.23	1935.40	1727.06	1573.14	1401.67	1284.63
180.0	2575.63	2370.22	2178.27	1945.35	1772.71	1614.69	1428.01	1302.18	1199.18
225.0	2261.37	2071.76	1890.92	1721.79	1526.33	1390.55	1155.76	1155.76	1073.07
270.0	2544.03	2339.20	2106.28	1922.52	1749.30	1593.63	1422.16	1305.70	1207.96
315.0	2383.68	2194.65	2009.72	1840.59	1649.22	1516.96	1398.16	1164.25	1164.25
360.0	2542.86	2351.49	2167.15	1943.01	1778.56	1629.91	1469.56	1288.72	1166.82
C/γ(°)	27.0	28.0	29.0	30.0	31.0	32.0	33.0	34.0	35.0
0.0	1145.58	1066.46	983.82	869.82	771.97	672.72	576.74	461.92	377.70
45.0	1280.53	1186.89	1086.24	1005.48	909.50	784.85	686.53	590.55	479.36
90.0	1129.66	1044.57	954.85	833.42	736.10	637.78	541.98	428.21	343.64
135.0	1187.48	1098.53	986.75	889.60	790.11	691.21	572.41	480.53	394.50
180.0	1089.16	1000.79	903.65	776.65	673.07	576.51	484.62	379.28	301.45
225.0	987.92	890.01	764.60	666.57	572.64	458.87	376.77	300.40	215.01
270.0	1125.45	1024.20	926.47	803.57	704.67	607.52	492.82	407.38	328.37
315.0	1086.88	1003.31	904.11	802.23	676.11	579.20	486.85	400.41	302.27
360.0	1145.58	1066.46	983.82	869.82	771.97	672.72	576.74	461.92	377.70
C/γ(°)	36.0	37.0	38.0	39.0	40.0	41.0	42.0	43.0	44.0
0.0	298.52	228.41	154.85	111.49	86.91	75.38	69.88	63.79	59.17
45.0	395.67	313.74	313.74	154.91	108.33	80.64	73.56	68.30	64.14
90.0	269.20	188.56	135.13	96.45	75.26	69.47	64.90	61.27	56.47
135.0	314.32	295.01	207.52	109.55	77.54	69.06	63.91	59.46	56.53
180.0	301.45	152.69	108.79	82.46	70.34	64.96	61.27	57.29	54.37
225.0	155.03	108.56	83.69	72.04	66.66	62.97	59.46	55.65	52.85
270.0	309.06	225.08	128.16	94.92	78.36	69.99	65.31	61.51	58.00
315.0	230.34	167.67	118.27	83.04	72.80	67.48	62.56	58.76	55.25
360.0	298.52	228.41	154.85	111.49	86.91	75.38	69.88	63.79	59.17

Intensity data(cd)

C/γ(°)	45.0	46.0	47.0	48.0	49.0	50.0	51.0	52.0	53.0
0.0	56.01	52.20	49.57	47.17	44.83	42.66	40.15	38.22	36.46
45.0	58.87	55.71	52.85	50.10	47.05	44.71	42.55	40.03	38.22
90.0	53.61	50.86	48.34	45.65	43.42	41.43	39.15	37.28	35.29
135.0	52.90	50.39	48.05	45.76	43.37	41.38	39.50	37.81	35.82
180.0	51.56	48.46	46.17	44.13	42.14	39.85	38.10	36.40	34.82
225.0	50.10	47.17	44.95	42.96	40.50	38.68	36.99	34.88	33.30
270.0	54.13	51.21	48.69	45.82	43.66	41.08	39.15	37.40	35.70
315.0	52.55	50.04	47.75	44.95	42.90	40.85	38.51	36.69	35.00
360.0	56.01	52.20	49.57	47.17	44.83	42.66	40.15	38.22	36.46
C/γ(°)	54.0	55.0	56.0	57.0	58.0	59.0	60.0	61.0	62.0
0.0	34.35	32.66	31.13	29.67	27.80	26.51	25.05	23.94	22.88
45.0	36.40	34.35	32.77	31.19	29.26	27.92	26.63	25.40	23.94
90.0	33.65	32.07	30.26	28.85	27.45	26.16	24.70	23.70	22.77
135.0	34.24	32.77	30.96	29.55	28.21	26.69	25.57	24.35	23.06
180.0	32.89	31.43	29.96	28.32	27.10	25.57	24.46	23.35	22.47
225.0	31.78	30.37	28.62	27.27	26.10	24.64	23.58	22.65	21.48
270.0	33.59	32.01	30.55	29.20	27.56	26.34	25.11	23.70	22.77
315.0	33.36	31.37	29.90	28.50	26.92	25.69	24.23	23.23	22.18
360.0	34.35	32.66	31.13	29.67	27.80	26.51	25.05	23.94	22.88
C/γ(°)	63.0	64.0	65.0	66.0	67.0	68.0	69.0	70.0	71.0
0.0	21.71	20.83	20.07	19.31	18.32	17.73	17.15	16.50	15.80
45.0	22.94	22.00	21.07	20.19	19.49	18.49	17.85	17.32	16.50
90.0	21.77	20.72	19.96	19.25	18.32	17.67	17.15	16.39	15.86
135.0	22.12	21.24	20.42	19.49	18.73	18.02	17.50	16.80	16.15
180.0	21.36	20.42	19.66	19.02	18.08	17.44	16.97	16.39	15.68
225.0	20.60	19.84	18.90	18.14	17.56	16.91	16.33	15.74	15.33
270.0	21.77	20.72	19.90	18.96	18.26	17.67	17.03	16.39	15.80
315.0	21.24	20.25	19.49	18.67	17.97	17.26	16.68	16.09	15.57
360.0	21.71	20.83	20.07	19.31	18.32	17.73	17.15	16.50	15.80
C/γ(°)	72.0	73.0	74.0	75.0	76.0	77.0	78.0	79.0	80.0
0.0	15.33	14.92	14.34	13.93	13.46	13.11	12.82	12.47	12.11
45.0	15.98	15.45	15.04	14.40	14.05	13.69	13.34	12.87	12.58
90.0	15.33	14.86	14.40	14.05	13.69	13.28	12.99	12.64	12.35
135.0	15.57	15.10	14.63	14.16	13.81	13.52	13.23	12.82	12.52
180.0	15.22	14.81	14.28	13.93	13.58	13.28	12.93	12.70	12.29
225.0	14.75	14.40	13.93	13.64	13.23	12.99	12.64	12.23	12.00
270.0	15.33	14.86	14.40	13.93	13.64	13.17	12.93	12.58	12.23
315.0	14.98	14.51	14.10	13.64	13.28	12.87	12.58	12.35	11.94
360.0	15.33	14.92	14.34	13.93	13.46	13.11	12.82	12.47	12.11
C/γ(°)	81.0	82.0	83.0	84.0	85.0	86.0	87.0	88.0	89.0
0.0	11.76	11.47	11.35	10.89	10.65	10.42	10.18	10.07	9.89
45.0	12.29	11.94	11.70	11.41	10.89	10.59	10.42	10.24	10.07
90.0	12.00	11.76	11.53	10.94	10.71	10.53	10.36	10.12	9.95
135.0	12.29	11.94	11.65	11.18	10.83	10.59	10.36	10.18	10.07
180.0	12.00	11.65	11.41	10.89	10.65	10.42	10.18	10.01	9.83
225.0	11.65	11.41	10.94	10.65	10.48	10.18	10.07	9.83	9.83
270.0	11.82	11.65	11.35	10.94	10.53	10.36	10.18	10.12	9.83
315.0	11.59	11.29	11.12	10.71	10.42	10.30	10.12	10.01	9.89
360.0	11.76	11.47	11.35	10.89	10.65	10.42	10.18	10.07	9.89

Intensity data(cd)

C/γ(°)	90.0
0.0	9.83
45.0	9.83
90.0	9.83
135.0	9.89
180.0	9.89
225.0	9.83
270.0	9.95
315.0	10.07
360.0	9.83